

# AGED CARE EMPLOYMENT PROGRAM

## CHC33015 Certificate III in Individual Support (Ageing)

### Overview

This unique employment program, being delivered in partnership with Alino Living, has been designed to meet Alino Living's need for entry level care support staff.

Alino Living is a new organisation encompassing three independent aged care organisations on the Central Coast. Delivering a brighter future for hundreds of residents and team members, Adelene, Central Coast Community Care Association and Vietnam Veterans Keith Payne VC Hostel have merged to become one organisation. Alino Living is the largest independent not-for-profit aged care organisation on the Central Coast of NSW.



This employment program will be delivered onsite in one of their aged care facilities located in Killarney Vale, providing hands on training with a view to employment as a care support worker with the organisation.

Both ET Australia and Alino Living share a vision for the ways in which the entry level workforce needs to be prepared and trained. This has resulted in a collaborative partnership between the two organisations.

To be considered for employment with Alino Living, students must participate in a CHC33015 Certificate III in Individual Support (Ageing) employment program. There will be opportunities for employment with Alino Living for the best suited students on program completion.

The training is subsidised by the NSW Government under the Smart and Skilled initiative (eligibility criteria applies).

This is a fantastic opportunity to become part of the Alino Living team.

Students will learn how to meet the personal support needs of the older person, support their independence and well-being, use safe working practices for direct care work. Alino Living's policies and procedures will be embedded into the training to prepare the students for the 120 hours of work placement.

The combination of classroom-based learning with work placement provides the foundations required to work with aged people.

## Program Entry Requirements

All applicants are required to complete an application form, participate in an information session attend an interview for selection into the program. Interviews are conducted with each applicant to determine their suitability for the program and to ensure the program meets their career aspirations.

Aged care work can be emotionally and physically challenging and is very hands on. Applicants must have the functional capacity and fitness to perform the tasks and duties necessary to work in the aged care sector. Applicants who, due to fitness or functional capacity, would place themselves or others at risk of harm or injury would be unsuitable for the program.

Students must have the physical capability to be able to perform cardiopulmonary resuscitation (CPR) for 2 minutes on a manikin placed on the floor to meet the necessary criteria for the first aid unit of competency which is included in this program.

It is recommended that students have sound digital skills (for example, digital skills to send a text message, to send an email, to research using the internet which can all be done using a smart phone).

Applicants are required to have sufficient language, literacy and numeracy skills and it is recommended that applicants have good communication and interpersonal skills.

In order to complete the practical components of this program applicants must demonstrate a level of maturity and discretion.

Applicants who are offered a place in the program will be required to undertake a criminal history check to meet workplace regulatory requirements.

The Australian Government Department of Health and Ageing requires that any person who provides care within an aged care service must have a police check prior to being present 'on site'. Students must not have previous convictions which would exclude them from working in the aged care sector as outlined in the Aged Care Act 1997 (murder, sexual assault, any other form of assault which has resulted in a sentence of imprisonment or any other conviction which would be considered, on the basis of risk and relevance, to render them unsuitable for work placement in an aged care setting). Please note, if a student has any outcome/s at all appearing on their criminal history check, ET Australia must seek approval from the host work placement organisation for the student to participate in work placement. ET Australia approaches cases such as this with sensitivity and the identity of the student is not disclosed during this process.

Students will need to provide immunization documentation prior to being present on site at Killarney Court Aged Care. At a minimum students are required to have a current flu vaccination and the commencement (at least) of Hepatitis B. In addition, students must provide evidence of being fully vaccinated against COVID-19. COVID-19 vaccination has been mandated in residential aged care through public health orders.

## Employment Opportunities

The purpose of this program is to assist Alino Living with their recruitment for entry level staff. Alino Living are intending to employ suitable candidates from the program as Care Support Workers. Offers of employment will be made to students who display the qualities and attributes they are looking for in entry level staff.

Other examples of employment opportunities include Accommodation Support Worker, Assistant in Nursing, Care Assistant / Worker, Care Service Employees, Nursing Assistant, Personal Care Assistant, Residential Care Worker.

## Further Study

Students who successfully complete this qualification may choose to further their studies to a higher level in a related area such as CHC43015 Certificate IV in Ageing Support.

Students who successfully complete this qualification may also choose to further their studies at the same level and undertake units from the specialised elective unit streams available within the CHC33015 Certificate III in Individualised Support qualification e.g. Disability specialisation.

Students may elect to further their studies in more specialised qualifications at a higher AQF level from the Community Services Training Package.

## Structure

This program combines classroom-based sessions with work placement which is integrated throughout the duration of the program.

Students are required to participate **in all** scheduled classes unless arranged otherwise with an ET Australia Representative.

Students are required to complete a minimum of 120 hours of work placement. This is mandatory for successful completion of the qualification. The 120 hours will be achieved during the scheduled work placement blocks.

**Training Days:** Classroom days – Tuesdays, Wednesdays, Thursdays  
(2 blocks of work placement will be integrated throughout the program)

**Dates:** 27 April 2022 – 8 September 2022

**Venue:** **Classroom** – Killarney Court Aged Care, Corner Cornish Avenue and Wyong Road, Killarney Vale  
**Work placement** – will be hosted within Alino Living’s facilities on the Central Coast; Killarney Court, Killarney Vale  
 Lake Haven Court Aged Care, Charmhaven  
 Vietnam Veterans Hostel, Noraville

**Times:** 9.00am to 3.00pm (**except for first aid training which is 9.00am to 4.00pm and during work placement**).

Note: The program hours are Centrelink approved and are considered to be full-time over the period.

## Units of Study

Code	Title	Core Unit	Elective Unit
CHCCCS015	Provide individualised support	✓	
CHCCCS023	Support independence and well being	✓	
CHCCOM005	Communicate and work in health or community services	✓	
CHCDIV001	Work with diverse people	✓	
CHCLEG001	Work legally and ethically	✓	
HLTAAP001	Recognise healthy body systems	✓	
HLTWHS002	Follow safe work practices for direct client care	✓	
CHCAGE001	Facilitate the empowerment of older people		✓
CHCAGE005	Provide support to people living with dementia		✓
CHCCCS011	Meet personal support needs		✓
HLTHPS006	Assist clients with medication		✓
HLTAID003	Provide first aid *		✓
HLTINF001	Comply with infection prevention and control policies and procedures		✓

\* This unit is delivered by Vital First Aid (RTO ID 90531) <https://www.vitalfirstaid.com.au/> under an approved Smart and Skilled subcontract arrangement (approval number TMO\_0002022\_566). Under this subcontract arrangement ET Australia will maintain responsibility to ensure the quality of the training and assessment, develop the training plan, manage complaints and issue certification. Vital First Aid will be responsible for the delivery and assessment of the first aid unit.

## How will I be assessed, and do I need to complete activities outside of the classroom sessions?

A variety of assessment techniques will be used.

Students are required to attend all scheduled classes and participate in work placement for learning and the on-the-job assessment component of the program (a minimum of 120 hours of work placement is compulsory).

Students must successfully complete all assessment activities for each unit to achieve the qualification. Types of assessment activities include question and answer activities, case studies, simulations, workbook activities, projects and practical on the job activities.

Students are required to complete learning / assessment activities outside of classroom hours, the amount of time required will vary from student to student. As a general rule, the same amount of time spent in class should also be spent outside the classroom. Your trainer will prescribe the additional activities for you, which will include revision, learning and preparation for assessment.

## Eligibility and Student Fees (Subsidised Training Place)

This program is **fee free (\$0)** for people who meet the Smart and Skilled and Skilling for Recovery eligibility criteria as outlined below.

To be eligible for a Smart and Skilled subsidised training place, at the time of enrolment an individual must:

- Be an Australian citizen, a permanent Australian resident, a humanitarian visa holder or a New Zealand citizen, and
- Be aged 15 years or older, and
- Live or work in New South Wales, and
- No longer be at school or equivalent

If you meet the Smart & Skilled Program eligibility above and one of the following criteria you could complete this training fee free under the Skilling for Recovery initiative\*:

- 16-24 years old (employed or not)
- A Veteran or Veteran's Recognised Partner
- In receipt of a Commonwealth Government benefit as specified in Attachment 1 (and their dependants)
- Unemployed (with or without a benefit)
- Currently employed and intending to undertake this qualification (a priority qualification on the Skilling for Recovery list)
- At risk of unemployment

\* Training under JobTrainer is **fee-free** and fully funded by the NSW and Commonwealth governments.

## What support is on offer?

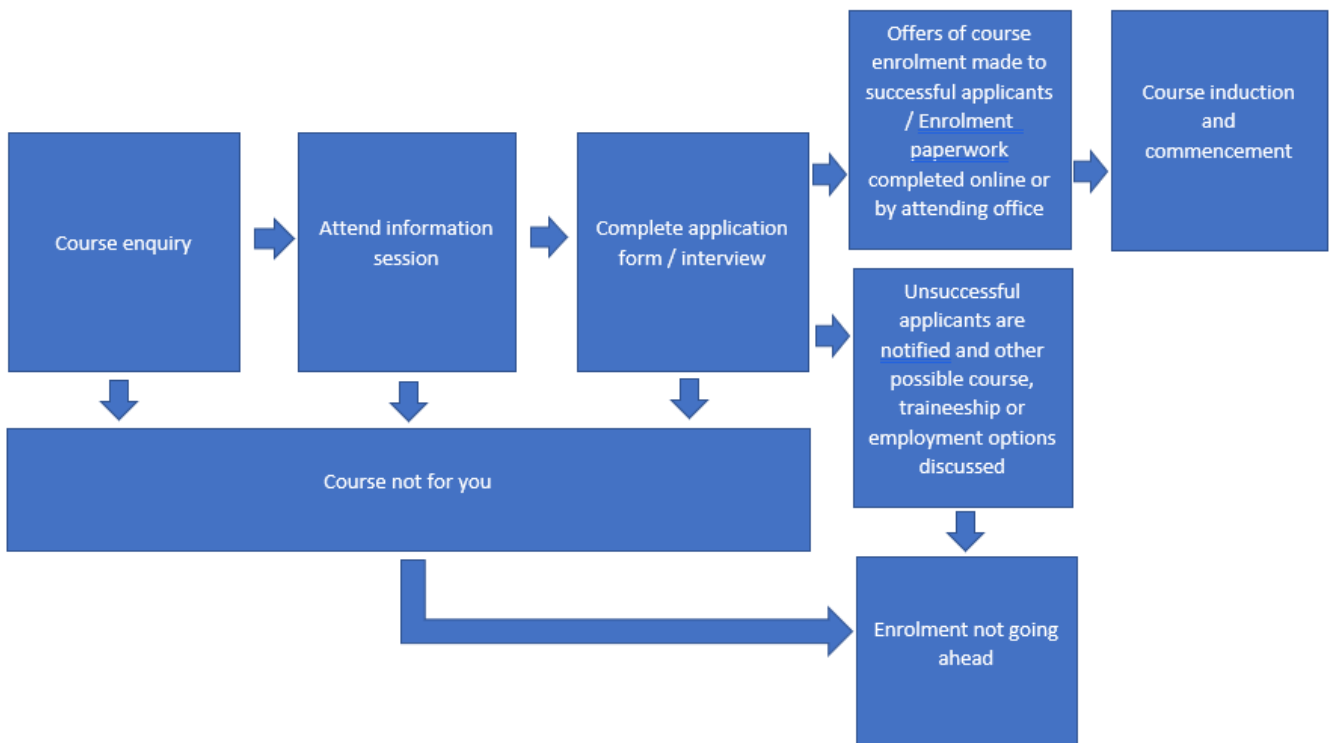
ET Australia has a dedicated Training Officer for each training program run. The Training Officer works closely with all students throughout the training period. In addition, students have additional access to the Trainer/Assessor, above and beyond the classroom hours. ET Australia prides itself on providing a supportive learning environment for all students and if we can't provide the type of support required by a student, we will link them to the appropriate external organisation.

## Where can I obtain additional information?

Pre-enrolment information is available and will assist prospective students to make an informed choice prior to enrolling. The pre-enrolment information can be accessed via our website and should answer any additional questions a prospective student may have. To access this information, click on the following link <https://etaustralia.com/smart-skilled/> and select 'Pre-enrolment Information'.

Alternatively, please call our office on 4323 1233 or email [training@etaustralia.com](mailto:training@etaustralia.com) to get in contact with ET Australia's Product Specialist.

## How can I enrol?



To register your interest please call ET Australia on 4323 1233 or email [training@etaustralia.com](mailto:training@etaustralia.com)

If you are accepted into the program, you will need to obtain a Unique Student Identifier (USI) before you enrol. For more information visit <http://www.usi.gov.au/Pages/default.aspx> or speak with an ET Australia representative.

## Attachment 1 - Fee exemptions and concessions

Students who qualify for a **fee exemption** are:

- Australian Aboriginal or Torres Strait Islander people
- People with a disability (ie people who meet the disability fee exemption criteria, including the dependent child, spouse or partner of a recipient of a Disability Support Pension).
- Recipients of Fee-Free Scholarships

A student who receives a specified Commonwealth benefit or allowance is eligible for a **concession fee** for a qualification up to and including a Certificate IV. A student who is receiving an eligible benefit or allowance at the time of enrolment is eligible for a concession.

The concession fee is also available to a student who is a dependant of a person receiving a specific Commonwealth benefit or allowance. To be eligible for the concession the person who the student is a dependant of must be receiving the benefit or allowance at the time of enrolment.

The specified Commonwealth benefits and allowances for concession fees include:

- Age Pension
- Austudy
- Carer Payment (this category does not include the Carer Allowance or Carer Adjustment Payment)
- Disability Support Pension
- Family Tax Benefit Part A (maximum rate)
- JobSeeker Payment
- Farm Household Allowance
- Parenting Payment (Single)
- Special Benefit
- Veterans' Children Education Scheme
- Veterans' Affairs Pensions
- Widow Allowance
- Youth Allowance.